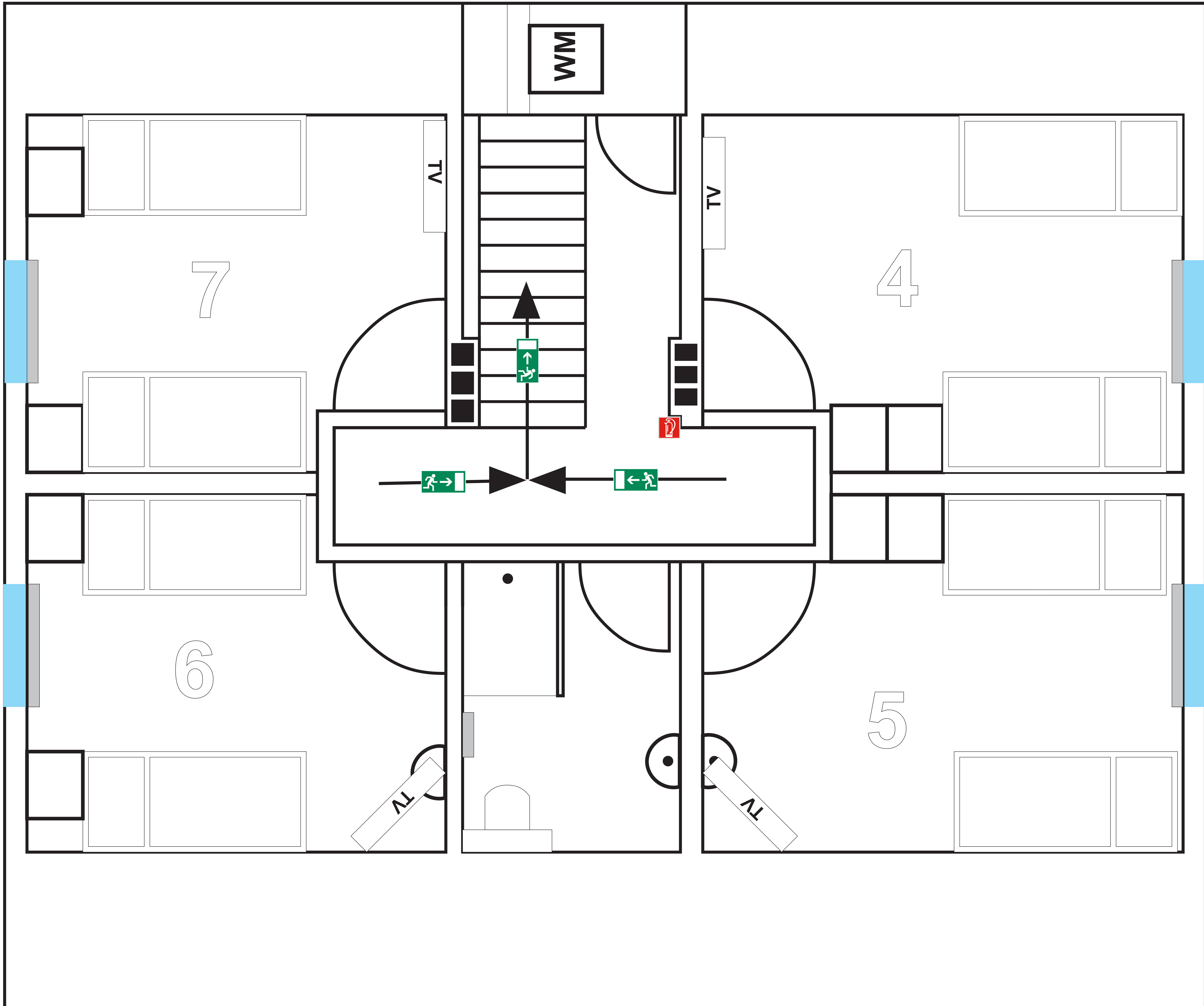


# MAN SARDE / ATTIC

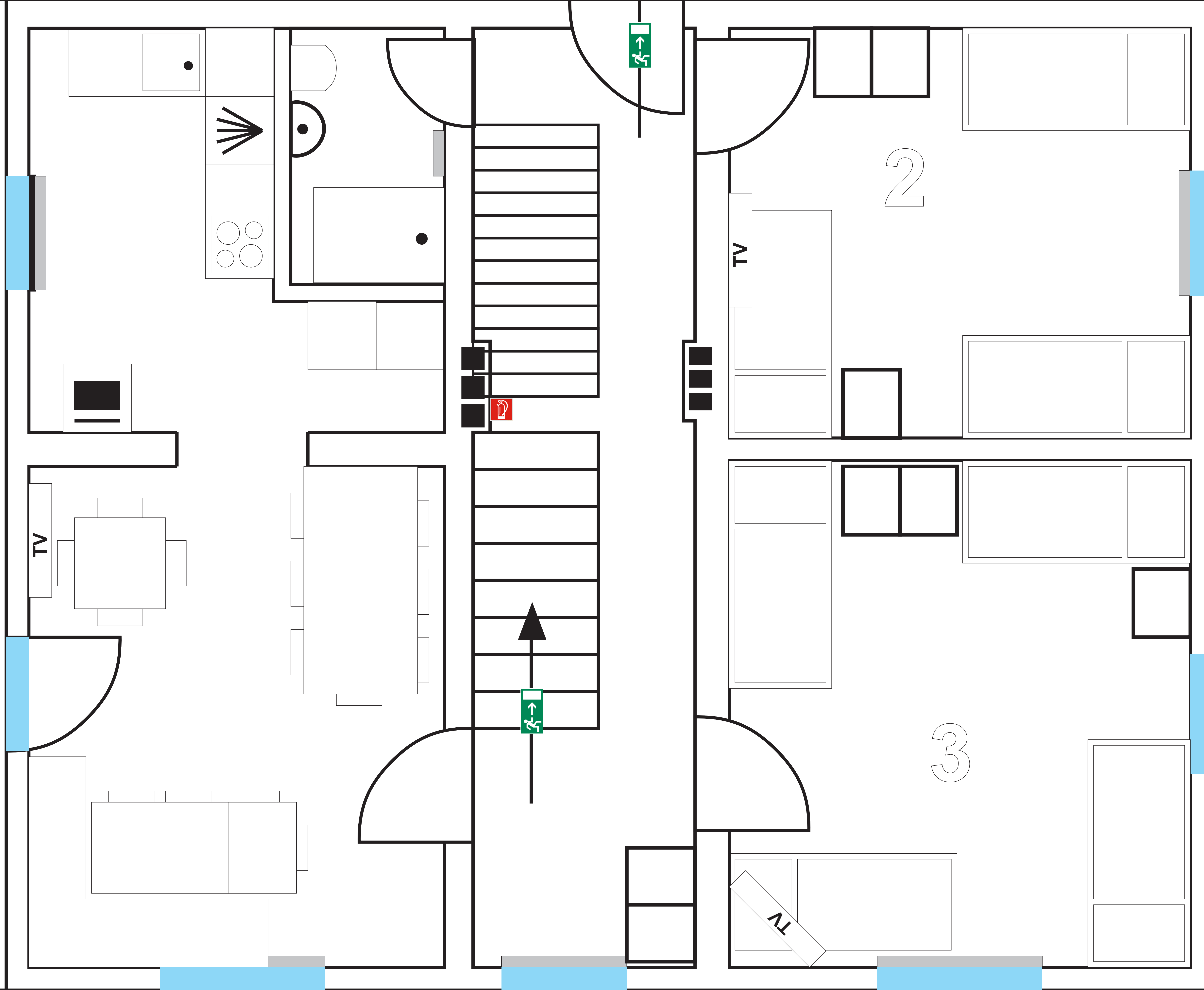


# 1.OBERGESCHOSS

# 1st FLOOR



DACHTERRASSE  
ROOF TERRACE  
30 m<sup>2</sup>



# Erdgeschoss Ground Floor

SCHLAFRAUM  
BEDROOM  
6 m<sup>2</sup>

BADEZIMMER  
BATHROOM  
6 m<sup>2</sup>

KÜCHE  
KITCHEN  
6 m<sup>2</sup>

WM

BAD  
BATHROOM  
6 m<sup>2</sup>

VORRAUM  
ANTEROOM  
4 m<sup>2</sup>

HEIZUNG

EINGANG  
ENTRANCE



SCHLAFRAUM  
BEDROOM  
16 m<sup>2</sup>

VORRAUM  
ANTEROOM  
6 m<sup>2</sup>

WOHN-  
SCHLAFRAUM  
MIT KOCHNISCHE  
LIVINGROOM WITH  
KITCHEN  
20 m<sup>2</sup>

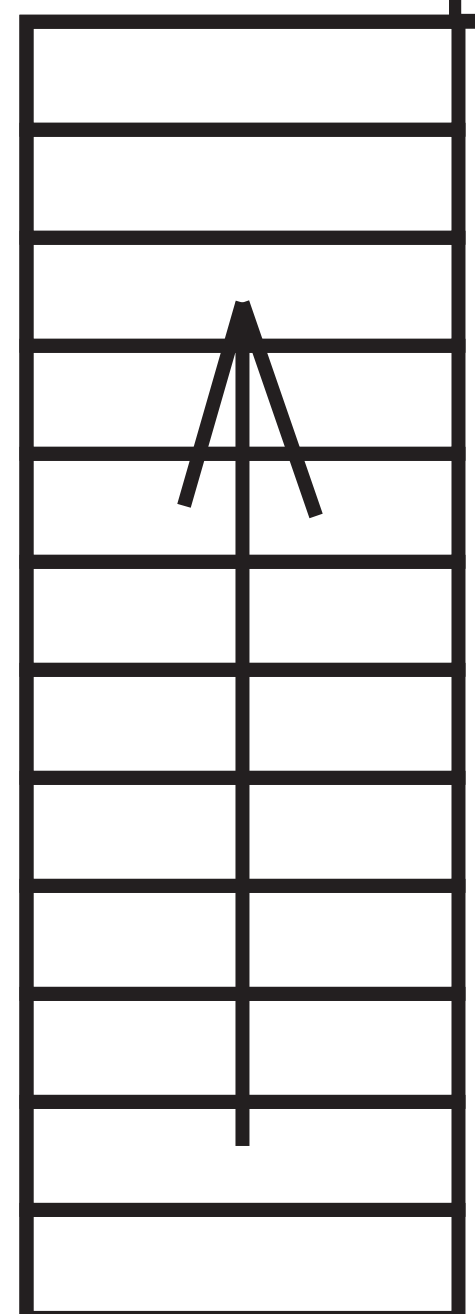
G

EINGANG  
ENTRANCE



TERRASSE  
TERRACE

GARTEN  
GARDEN



1

TV

